

municipal accessible

ROUTES PLAN

The Campo Grande Urban Environmental Development **Master Plan** mandates its preparation,

aiming to **upgrade public pathways**

to ensure **accessibility, safety, comfort, and autonomy,**

connecting community facilities to the **public transit system.**



A CITY FOR ALL

The Plan seeks to guarantee access to the city and its opportunities, prioritizing women, children, the elderly, and people with disabilities and/or reduced mobility.



The Plan's Pilot Project will promote **integrated urban development**, positively impacting aspects of mobility, socioeconomics, social interest housing, and the environment in the **Coophavila II** neighborhood, Campo Grande/MS.



mobility

- to prioritize the pedestrian
- to access community facilities
- to enhance transit connectivity



socioeconomics

- to promote mixed land use
- to foster local neighborhood hubs



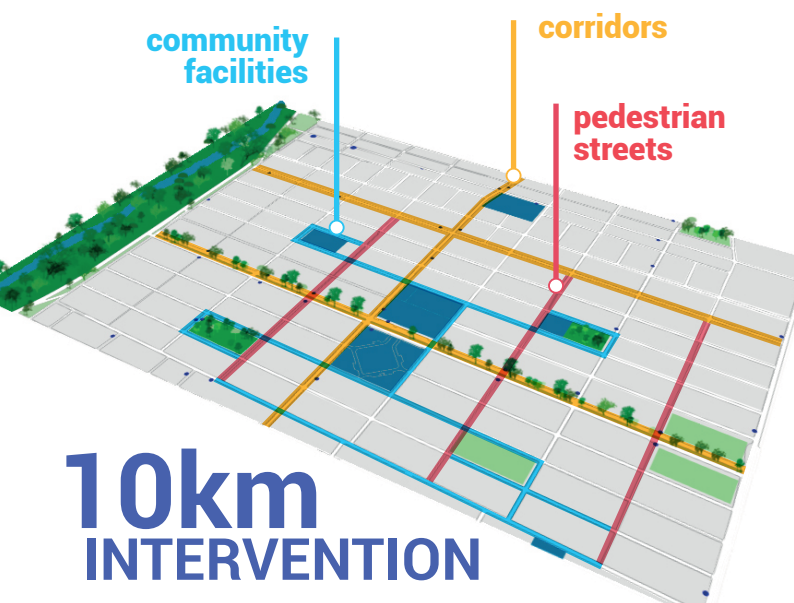
housing

- to integrate land tenure regularization areas with urban improvement



environment

- to contribute to microclimate improvement
- to deploy Nature-Based Solutions (NBS) for drainage issues



The goal is to improve walkability conditions through sidewalk standardization and leveling, pedestrian lighting, safe crossings, signage, resting and social areas, urban furniture incorporating Universal Design, Nature-Based Solutions for drainage, in addition to arborization and landscaping.

And to connect the public transit system to healthcare, education, social assistance facilities, parks, public squares, green areas, and commercial and service hubs.